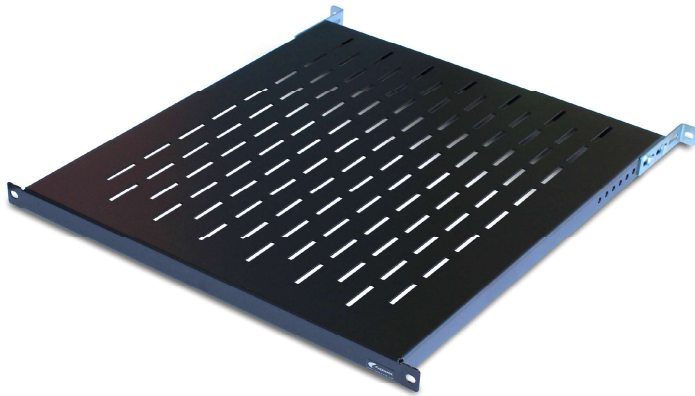


Datacenter and 19' Products
19" Rack Shelves
 Fixed

Fixed Shelf 520mm
1/2U 19" - Ref. 40052

Characteristics



Fixed vented shelf 520mm, designed for 19" racks cabinets with front and rear fixing.

19" assembly with four anchoring points on the front/rear sections.

For placement of equipment such as monitors and UPS that do not have 19" fixation.

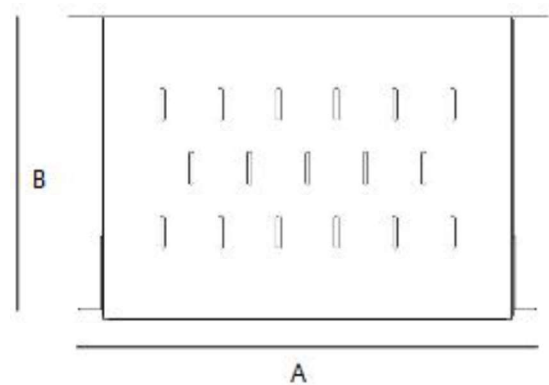
Vent design maximizes airflow and prevents hot spots, while maintaining structural integrity.

With mounting brackets to adjust the depth of the shelf

This fixed Rack shelf will occupy less than 1U of rack space.

Specifications

Weight: 3025.
 A: 19".
 B: 520mm.
 Height: 25mm.
 Material: Laminate steel 1,5mm.
 Black textured epoxy RAL 9005.
 Scratch resistant.
 Pack: 1 unit in carton box.
 Support up to 40kg.
 Distance between mounting profiles
 (min/max):300/540mm.



References

- 40050 - Fixed Shelf 250mm 1U.
- 40051 - Fixed Shelf 380mm (front/rear fix.).
- 40051-400 - Fixed Shelf 400mm 2U
- 40055 - Fixed Shelf 600mm (front/rear fix.) 1U.
- 40091 - Fixed Shelf 730mm (front/rear fix.) 1U.